



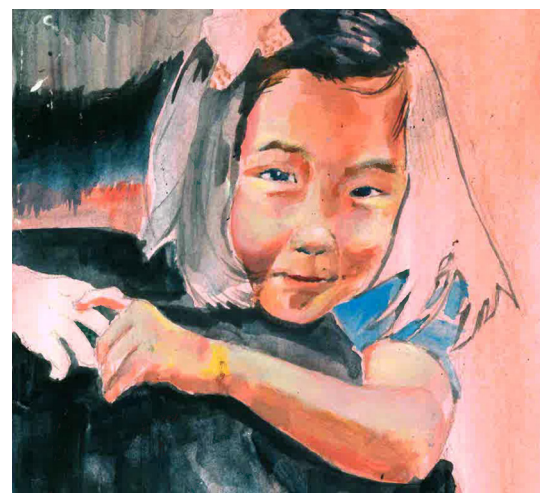
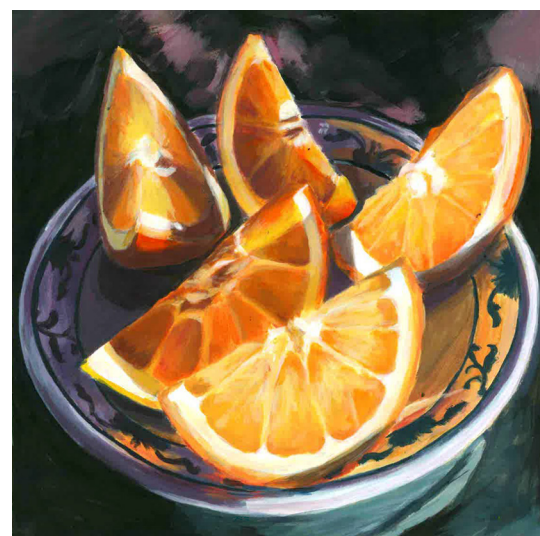
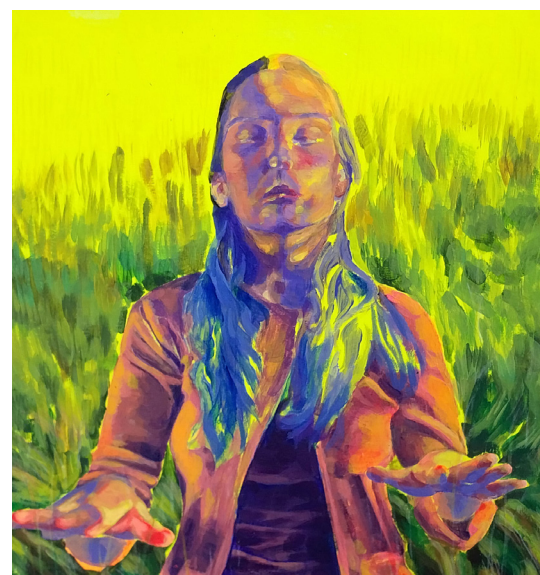
PROSPECTUS



Westlake Girls High School
Te Kura Tuarua o ngā Taitamawāhine o Ururoro

Contents

Principal's Welcome	3
About Us	4
Why a Girls' School?	4
Your Academic Journey	5
Find Your House, Find your Family	5
Leadership	6
Prefects & Tuākana	6
Student Council: Your Voice Matters	6
Growing Future Leaders	6
Giving Back	7
Fundraising	7
Contributing to the Community	7
Service as a Core Value	7
Clubs & Activities	8
Alumni Community	8
Where Ideas Take Flight (STEAM)	9
Game On: Sport at Westlake	10
CYGNET Programme	10
Music Academy	12
Creative Arts	13
Uniform: A Symbol of Belonging	14
International Students	15
A Global School for a Global Future	16
Need to Know: Quick Facts	17
How to Enrol	18





Principal's Welcome

Welcome to Westlake Girls High School.
We are delighted you are considering becoming one of our students.

Choosing a secondary school is an important decision, and we are proud to offer a learning environment where young women are encouraged to aim high, challenge themselves, and develop a strong sense of who they are.

At Westlake Girls, academic excellence sits alongside a deep commitment to wellbeing, connection, and personal growth. Our values of manaakitanga and turangawaewae are woven through every aspect of school life, creating a culture where students feel supported, respected, and able to thrive. We want every student to feel known, valued, and confident in their place within our community.

We actively encourage our students to think independently, contribute confidently, and make the most of the wide range of opportunities available to them. Whether their passions lie in the classroom, the arts, sport, leadership, service, culture, or innovation, students are supported to participate fully and discover their strengths.

As a leading girls' school, we understand the power of an environment designed specifically for young women. Our students are encouraged to speak up, take initiative, and pursue subjects and opportunities without limitation or expectation. This confidence is reflected in the outstanding achievements of our students across many different areas of school life.

We are also recognised for our forward-thinking approach to STEAM education, with programmes that encourage creativity, collaboration, and real-world problem solving. Combined with strong teaching, extensive co-curricular opportunities, and a future-focused outlook, our students leave school equipped to succeed in an ever-changing world.

Above all, Westlake Girls is a place of connection — a school where students build lasting friendships, develop resilience, and grow into capable young women ready to make their mark beyond the school gates.

We look forward to welcoming you to our kura and sharing what makes Westlake Girls such a special place to learn.

To find out more, please visit Westlake Girls High School or join us at Open Night to experience our school community firsthand.

Jane Stanley
Principal

About Us

Since opening in 1962, Westlake Girls has become one of New Zealand's leading secular state girls' schools.

We're known for exceptional academic results, a top-tier co-curricular programme (including music, sport, and cultural opportunities), and a welcoming, progressive culture where every student can be her best.

Our academic success reflects the exceptional calibre of our teaching staff and the dedication of our students.



Why a Girls' School?

In a space where every voice is heard and every strength recognised, girls grow into young women who believe in their power to shape the world - and at Westlake, you will, too.

A girls' school offers a unique environment designed with you in mind. Free from traditional gender dynamics, you're encouraged to lead, pursue excellence across all subjects, and build deep, lasting friendships.

Here, you can focus fully on your learning, your passions, and who you want to become.

Research shows that girls in single-sex schools gain confidence, achieve strong academic results, and are better prepared to step into leadership roles beyond school.

Your Academic Journey

At Westlake Girls, all students study towards NCEA (National Certificate of Educational Achievement) – New Zealand’s internationally recognised secondary qualification.

Learning is a mix of internal assessments and external exams, with opportunities for high achievers to take on Scholarship exams for an extra challenge.

We’re committed to helping every learner reach her potential through tailored guidance and opportunities for extension.

www.westlakegirls.school.nz/student-life/academic/

“Westlake’s teachers go the extra mile – not just in the classroom, but in the way they build strong, supportive relationships with students.” — David Burton, Associate Principal.

“Both our daughters have thrived at WGHS - great culture, great leadership. Thank you to Jane Stanley and the team!” — Parent.

Find Your House, Find Your Family

At Westlake Girls, every student belongs to one of five Houses – Akoranga (black), Hauraki (yellow), Onewa (red), Pupuke (blue), or Wairau (green).

Your House becomes your home base – a place to make friends, work together, and build school spirit. You can earn House points for everything from Sports Day wins to cultural activities and fundraising challenges.

The House system adds fun, teamwork, and connection to everyday school life.



Akoranga
Literal Meaning is ‘Learning’

The House symbol uses the koru to reflect the baskets of knowledge and two circles symbolise the stones.



Hauraki
The Northern Winds

The House symbol uses the koru and the spikes to represent the northern winds and the Pōhutukawa flower.



Onewa
The Red Soils

The House symbol depicts a chin moko (tattoo) for Hine-ahu-one.



Pupuke
The Overflowing Lake

The House symbol reflects Mahuika through the fire finger-flames on the left-hand side which is surrounded by a koru representing the Pupuke eruption. The middle section depicts Rangitoto Island and the Tupua couple.



Wairau
Many Waters

The House symbol represents the battle with the first koru being Kawerau a Maki, the middle koru Ngā Puhī and the smallest koru at the top symbolising the crater formed by the blood spilt from the warriors. The name for the crater is “Ururoto” and forms part of the Māori name for both Westlake Girls and Westlake Boys. The lines amongst the koru reflect the blood lines that flowed within all the tribes involved.

Leadership

Leadership at Westlake Girls isn't about fitting a mould. It's about finding your strengths, backing yourself, and learning how to inspire others – whether front and centre or leading quietly behind the scenes.

Prefects & Tuākana

Prefect opportunities include the Head and Deputy Head Prefect roles, House Captains and specialist Prefects (in Academics, Arts, Sport, Service, Well-being, Environment, and more). Our Tuākana ('Big Sister' prefects) mentor younger students, building strong relationships and offering guidance, encouragement, and a sense of belonging. Prefects lead by example, speak at major events, and help create the positive, connected culture Westlake Girls is known for.



Student Council: Your Voice Matters

The Student Council gives students a voice to drive initiatives, share ideas, and create change while building real-world communication, teamwork, and leadership skills.



Growing Future Leaders

We offer leadership courses, workshops, and mentorships at every level. We encourage students to take leadership roles across academics, arts, sport, and community initiatives.

*Ma te huruhuru ka rere te manu.
(Adorn the bird with feathers so it can fly.)*



Giving Back

At Westlake Girls, service isn't just an activity – it's part of who we are. Contributing to the well-being of others, both within our school and our wider community, builds character, connection, and a stronger world.

Fundraising

Each House selects a charity to champion every year, with students leading creative fundraising initiatives. Students also fundraise for school projects, local organisations, and causes close to our community's heart.



Contributing to the Community

Westlake Girls students frequently volunteer for projects such as eco-restoration work in local parks and beaches. They also help local charities and events, making a tangible impact in our local area.

Service is a Core Value

We weave service into the fabric of Westlake Girls life. It's about seeing the needs of others, acting with compassion, and making a positive difference — building values that last a lifetime.



Clubs & Activities

Find your people. Find your passion.

From chess to kapa haka, there's something for everyone. Our wide range of clubs and activities allows students to discover new passions, make friends, and have fun along the way. Our 'Just Play' programme also offers a relaxed way for students to try new sports without pressure.



Alumni Community

A Connection for Life.

Once students join Westlake Girls, they become part of a lifelong whānau.

Our strong alumni network stays closely connected, with former students returning to inspire, mentor, and celebrate the next generation, and supporting each other through real-world advice, introductions, and opportunities.





Where Ideas Take Flight (STEAM)

At Westlake Girls, innovation starts with you.

Our award-winning STEAM programme (Science, Technology, Engineering, Arts, Mathematics) for Years 9 and 10 is all about hands-on learning – coding, designing, building, creating, and solving real-world challenges.

Recognised by the OECD for its innovation, our STEAM programme gives you the creativity, collaboration, and critical thinking skills you'll need to lead in the future.

You'll also work with mentors on a community project, proudly showcased at our annual STEAM Innovation Expo. (Places are limited – make sure you apply via the school website when enrolling.)

www.westlakegirls.school.nz/student-life/academic/steam



Game On: Sport at Westlake Girls

Research shows that many girls opt out of sport during their teenage years, so participation is one of our primary objectives.

At Westlake Girls, we believe every student should have the opportunity to experience the far-reaching benefits of sport, from improved well-being and confidence to stronger teamwork and resilience. We actively encourage students to get involved, whether they strive for high-level competition or simply play for fun and fitness. With an exceptional range of sporting codes on offer, every student can find their place — from basketball, sailing, netball, rowing and football to equestrian, waka ama, volleyball, motocross and more.

Westlake Girls teams regularly achieve outstanding success at regional and national levels – a testament to our athletes' talent, commitment, and teamwork.

Sport at Westlake Girls builds skill and fosters camaraderie, school spirit, and a lifelong appreciation for physical activity.

Our dedicated coaches and passionate volunteers are there every step of the way, helping students reach their potential and make the most of every opportunity.

For full details about Sport at Westlake Girls, including all the codes we offer and how to register, see www.westlakegirls.school.nz/student-life/sports

CYGNET Programme

Our specialist CYGNET programme supports motivated, talented young athletes to balance high-level sport with academic achievement in Years 9 and 10. Please see our website for more information, including the application process, dates for sports trials, and other details.

www.westlakegirls.school.nz/student-life/sports/cygnnet-programme







Year 9 Music Academy

Our specialist Music Academy is a full-year course for experienced students currently learning a musical instrument or voice. It offers an advanced level of practical music-making (theory and composition), alongside musicianship skills such as keyboard, guitar and aural training. Students join either an orchestra, band or vocal ensemble to develop ensemble awareness, with regular opportunities to perform at school events, community concerts and local music festivals. Applications are made during the online enrolment process.

Creative Arts

Unleash your imagination!
Creativity flourishes at Westlake Girls.

Whether you sing, dance, act, design, paint or sculpt, you'll find a place to express yourself – and expert teachers ready to help you shine.

- Music: Award-winning choirs, orchestras, and bands, including collaborations with Westlake Boys.
- Dance: A wide range of styles, exciting showcases, and competitions.
- Drama: Productions, theatre sports, and national festivals from Year 9 onwards.
- Visual Arts: Bring your creativity to life through design, photography, sculpture, and fine arts — with access to excellent facilities and inspiring teachers to guide you.



Uniform: A Symbol of Belonging

Students wear the stunning Westlake Girls uniform with pride, reflecting our values of respect and excellence. We require a neat, simple appearance, with hair tied back, minimal jewellery, and no makeup.

Uniforms are available in-store or online through the school's uniform supplier. We also run a second-hand uniform shop.

www.westlakegirls.school.nz/student-life/practical-information/uniform-webshop



International Students



Each year, Westlake Girls welcomes international students into our vibrant school community. With dedicated support, high-quality teaching, and rich cultural experiences, international students achieve very well in and out of the classroom. Visit our international website to learn more: www.international.westlakegirls.school.nz





A Global School for a Global Future

Westlake Girls is proudly inclusive and globally connected.

We welcome students from around the world, looked after by a dedicated international team. We also enjoy many annual cultural celebrations, including Korean Night, Chinese Night, Pinoy Night and more, and Language Week.

Through exchanges, overseas trips, and cultural experiences, students leave Westlake Girls with global friendships and a broadened perspective.

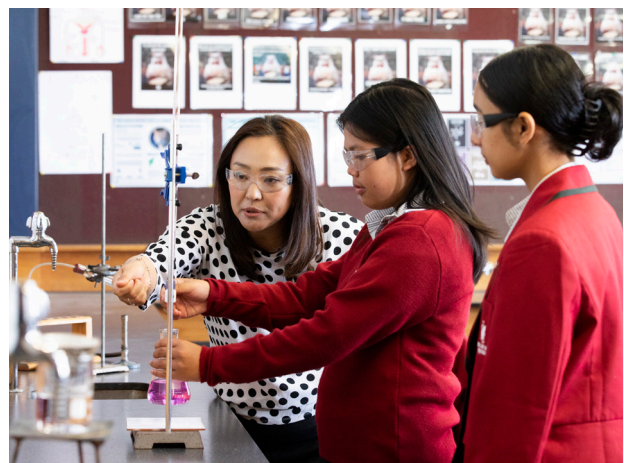
Student Support

Every student at Westlake Girls is cared for by:

- A Form Teacher and two House Deans
- The Learning Enhancement Department
- Counsellors and Health Centre staff
- The Careers Department
- The Senior Leadership Team which oversees student well-being

Our pastoral care ensures every student feels connected, welcome, and valued.

www.westlakegirls.school.nz/student-life/student-wellbeing/



Need to Know

What Students Want to Know

Will I know where to go on my first day? Yes! You'll attend Orientation Day at the end of Year 8. On your first official day as a Year 9, you'll be supported by Form Teachers, Deans, and older student buddies called Tuākana. You won't be on your own.

What's a typical day like? School starts at 8.45am and finishes at 3.15pm, except on Wednesdays (9.30am-3.15pm). You'll have five periods daily, with morning tea and lunch breaks. There are assemblies, House activities, and special events throughout the year.

What if I get lost? Don't worry – there's always someone to help. From Form Teachers and Deans to Counsellors and student leaders, we're here to support you. Just ask!



How to Enrol

Our enrolment process is straightforward and designed to ensure a smooth transition for new students and their families.

To apply, please visit the Enrolment page on our website and start your enrolment by clicking the red 'Apply Online Here' button.

You'll find detailed instructions there. Once your application is submitted, you'll receive a confirmation email.

After your application has been processed, you'll be invited to book an enrolment interview via our online booking system. These usually take place in Term 3, with orientation and testing for new Year 9 students held later in the year.

If a ballot is required for out-of-zone enrolments, details and key dates will be published on our website.

Students enrolling in Year 9 will also have the opportunity to apply for our CYGNET, Music Academy, and STEAM programmes. Application forms and further details are available online.

For International Students

We warmly welcome students from around the world. If you are an international family, please visit our dedicated International Student site for enrolment details, programme information, and support services: www.international.westlakegirls.school.nz/apply

We look forward to welcoming you to Westlake Girls High School.

10 FACTS ABOUT GIRLS' SCHOOLS

1

Students do **BETTER** academically, socially and emotionally

2

Participation in **STEM** is **HIGHER** at girls' schools

3

Students feel **EMPOWERED** to defy gender stereotypes

4

Students are **MORE** confident, self-assured and resilient

5

Students experience less bullying and greater **RESPECT**

6

Girls' schools better prepare students for **CAREER** and **LIFE SUCCESS**

7

Students in girls' schools are **HAPPIER** and feel they **BELONG**

8

Students from girls' schools have higher **ASPIRATIONS** and **AMBITIONS**

9

There's **HIGHER PARTICIPATION** in sport and physical activity

10

At girls' schools student **WELLBEING** comes **FIRST**

**THERE'S NO LIMIT TO
WHAT STUDENTS CAN
ACHIEVE IN A GIRLS' SCHOOL**

www.girlsschools.org

International Coalition
of Girls' Schools







Westlake Girls High School
2 Wairau Road, Takapuna
Auckland, 0627, New Zealand
+64 (0) 489 4169

www.westlakegirls.school.nz

—WGHS—

